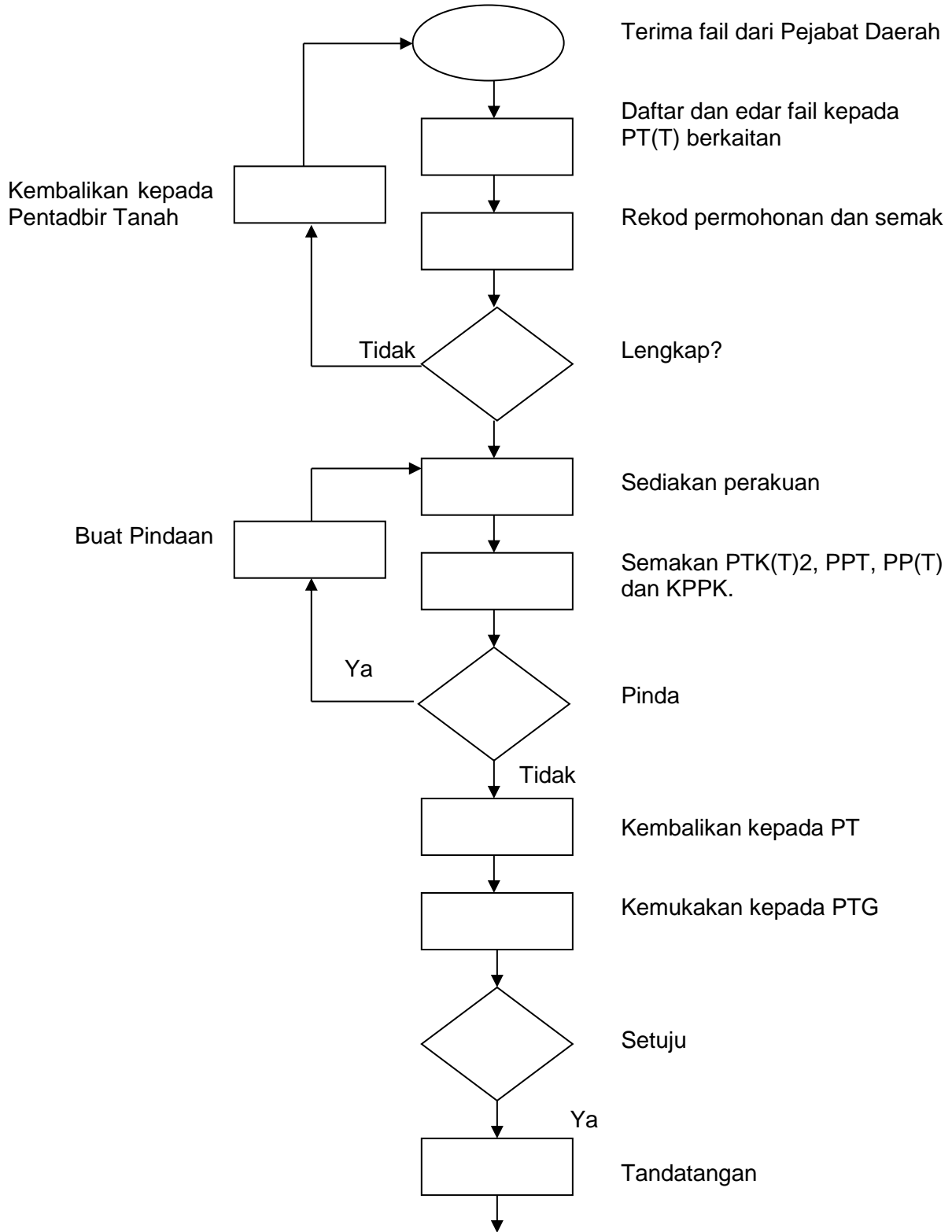
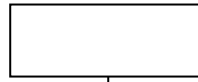
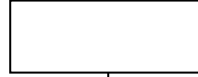


**CARTA ALIRAN KERJA PERMOHONAN PECAH SEMPADAN DI BAWAH
SEKSYEN 137 KANUN TANAH NEGARA
(DI PEJABAT TANAH DAN GALIAN SELANGOR)**

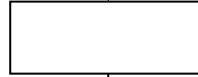




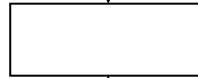
Terima fail dari PTG



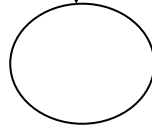
Rekod keputusan dalam Buku Daftar Fail.



Sediakan minit bebas untuk hantar fail ke PTD



Tandatangan minit PTK(2), PPT, PP(T)



Hantar fail ke Pejabat Daerah